



**Nevada Department of  
Health and Human Services**

**DIVISION OF HEALTH CARE  
FINANCING AND POLICY**

# **Out of State Residential Treatment Centers**

**Reporting Period September 2023**

DHHS Office of Analytics  
Nevada Medicaid

**Nevada DHHS Office of Analytics**  
**Nevada Medicaid Fee for Service (FFS) - Behavioral Health**  
**Out-of-State (OOS) Residential Treatment Center (RTC) Placements for Children**  
**September 2023**

Top 3 Diagnosis:

--Post-traumatic stress disorder, unspecified (F4310):	27 children	34.6% of total
--Disruptive mood dysregulation disorder (F3481):	19 children	24.4% of total
--Major depressive disorder, recurrent severe without psychotic features (F332):	7 children	9.0% of total

Patient Count:

--A total of 78 children were in Out-of-State RTC placement during the month of September 2023; 2.5% decrease compared to 80 children in August.  
--The average monthly Out-of-State patient count for the previous 11 months is 86.

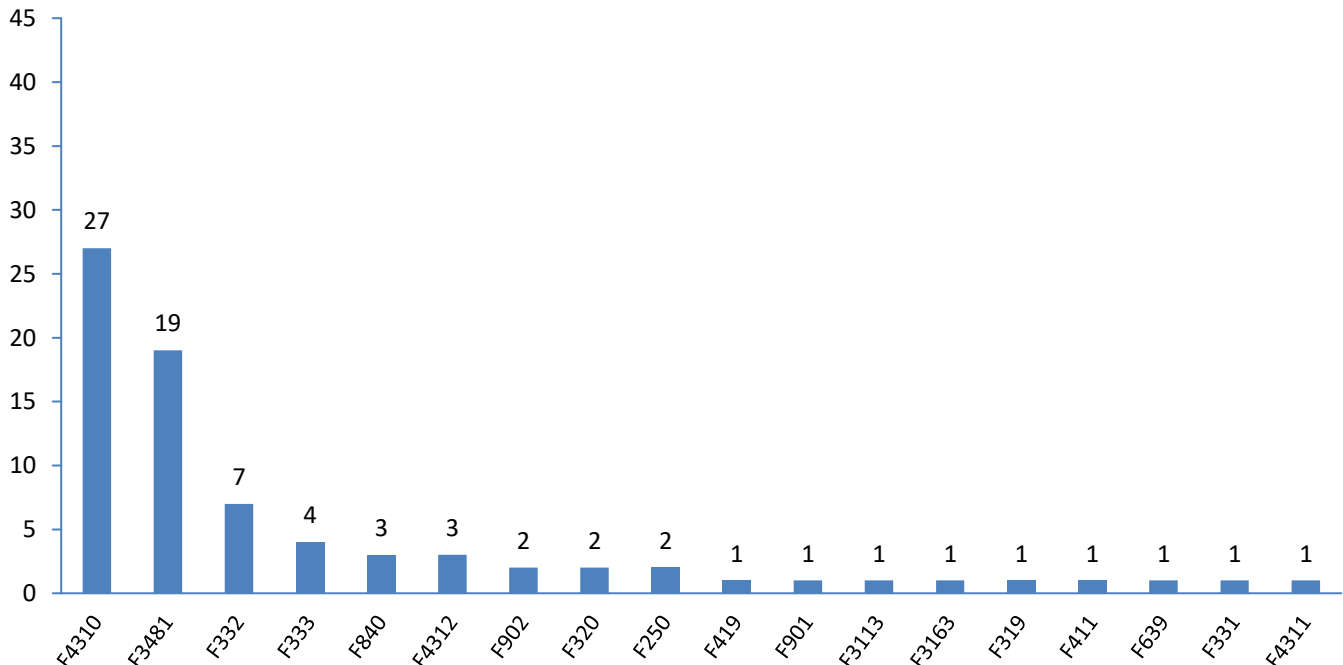
Net Payment:

--DHCFFP paid \$1,109,675 for Out-of-State RTC placements in September 2023; 2.1% increase compared to the spending of \$1,086,677 in August.  
--The average monthly Out-of-State spend for the previous 11 months is \$1,076,371.

For additional information, contact the BH Program Specialist at: BehavioralHealth@DHCFFP.nv.gov.

This report is provided for the use of specific DHHS staff only; these data are proprietary, confidential, and for internal use only. Do not distribute.

**Nevada DHHS Office of Analytics - Nevada Medicaid FFS - Behavioral Health**  
**Out of State Residential Treatment Center Placements for Children**  
**Patients by Principal Diagnosis**  
**September 2023**



Department of Health and Human Services  
Office of Analytics

Principal Diagnosis Code	Principal Diagnosis
F4310	Post-traumatic stress disorder, unspecified
F3481	Disruptive mood dysregulation disorder
F332	Major depressive disorder, recurrent severe without psychotic features
F333	Major depressive disorder, recurrent, severe with psychotic symptoms
F840	Autistic disorder
F4312	Post-traumatic stress disorder, chronic
F902	Attention-deficit hyperactivity disorder, combined type
F320	Major depressive disorder, single episode, mild
F250	Schizoaffective disorder, bipolar type
F419	Anxiety disorder, unspecified
F901	Attention-deficit hyperactivity disorder, predominantly hyperactive type
F3113	Bipolar disorder, current episode manic w/o psychotic features, severe
F3163	Bipolar disorder, current episode mixed, severe, w/o psychotic features
F319	Bipolar disorder, unspecified
F411	Generalized anxiety disorder
F639	Impulse disorder, unspecified
F331	Major depressive disorder, recurrent, moderate
F4311	Post-traumatic stress disorder, acute

The report indicates the number of out-of-state Fee for Service RTC patients who are children aged through 19 years old. Patients appear on this report only if the billing provider indicated a principal diagnosis on the submitted claim form. Diagnosis information may or may not appear on claim forms for patients with long-term medical conditions (e.g., diabetes). Patient counts are unique; however, if patients fall into more than one principal diagnosis during the indicated time period, they were counted one time under each principal diagnosis.

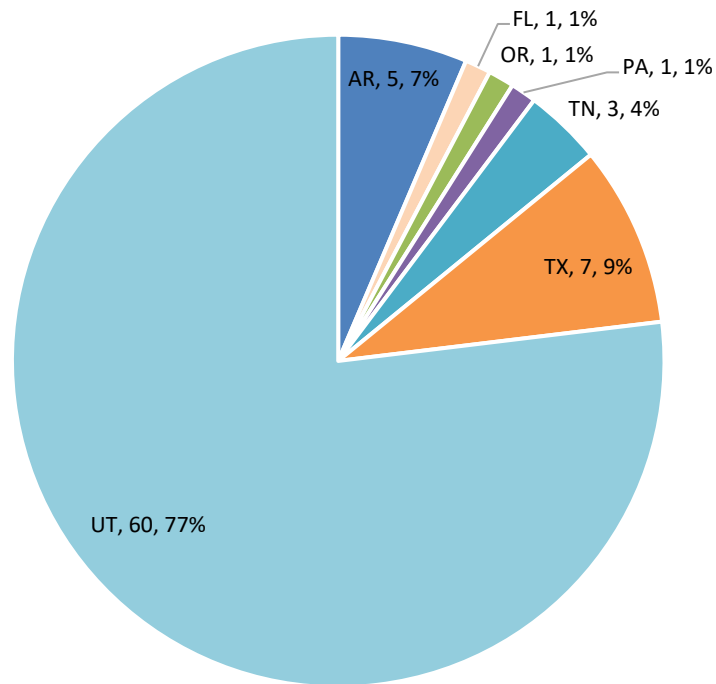
**Nevada Medicaid Fee for Service - Behavioral Health  
Out-of-State Residential Treatment Center Placements for Children  
Patients by Principal Diagnosis and Provider State  
September 2023**

Principal Diagnosis	Principal Diagnosis Code	September 2023									
		Patients*									
		Provider State								Total	Percent
		AR	FL	OR	PA	TN	TX	UT			
Post-traumatic stress disorder, unspecified	F4310	0	0	1	0	0	0	0	26	27	34.6%
Disruptive mood dysregulation disorder	F3481	2	1	0	0	1	7	8	19	24.4%	
Major depressive disorder, recurrent severe without psychotic features	F332	0	0	0	0	0	0	7	7	9.0%	
Major depressive disorder, recurrent, severe with psychotic symptoms	F333	0	0	0	0	0	0	4	4	5.1%	
Autistic disorder	F840	0	0	0	0	1	0	2	3	3.8%	
Post-traumatic stress disorder, chronic	F4312	1	0	0	0	1	0	1	3	3.8%	
Attention-deficit hyperactivity disorder, combined type	F902	0	0	0	0	0	0	2	2	2.6%	
Major depressive disorder, single episode, mild	F320	2	0	0	0	0	0	0	2	2.6%	
Schizoaffective disorder, bipolar type	F250	0	0	0	0	0	0	2	2	2.6%	
Anxiety disorder, unspecified	F419	0	0	0	0	0	0	1	1	1.3%	
Attention-deficit hyperactivity disorder, predominantly hyperactive type	F901	0	0	0	0	0	0	1	1	1.3%	
Bipolar disorder, current episode manic w/o psychotic features, severe	F3113	0	0	0	0	0	0	1	1	1.3%	
Bipolar disorder, current episode mixed, severe, w/o psychotic features	F3163	0	0	0	0	0	0	1	1	1.3%	
Bipolar disorder, unspecified	F319	0	0	0	1	0	0	0	1	1.3%	
Generalized anxiety disorder	F411	0	0	0	0	0	0	1	1	1.3%	
Impulse disorder, unspecified	F639	0	0	0	0	0	0	1	1	1.3%	
Major depressive disorder, recurrent, moderate	F331	0	0	0	0	0	0	1	1	1.3%	
Post-traumatic stress disorder, acute	F4311	0	0	0	0	0	0	1	1	1.3%	
<b>Total</b>		<b>5</b>	<b>1</b>	<b>1</b>	<b>1</b>	<b>3</b>	<b>7</b>	<b>60</b>	<b>78</b>	<b>100.0%</b>	

\* The report indicates the number of out-of-state Fee for Service RTC patients who are children aged through 19 years old. Patients appear on this report only if the billing provider indicated a principal diagnosis on the submitted claim form. Diagnosis information may or may not appear on claim forms for patients with long-term medical conditions (e.g., diabetes). Patient counts are based upon when the service occurred and not when the service was paid. Patient counts are unique; however, if patients fall into more than one principal diagnosis during the indicated time period, they were counted one time under each principal diagnosis.

**Nevada Medicaid Fee for Service - Behavioral Health**  
**Out-of-State Residential Treatment Center Placements for Children**

**Out-of-State RTC Patients by Provider States**  
**September 2023**

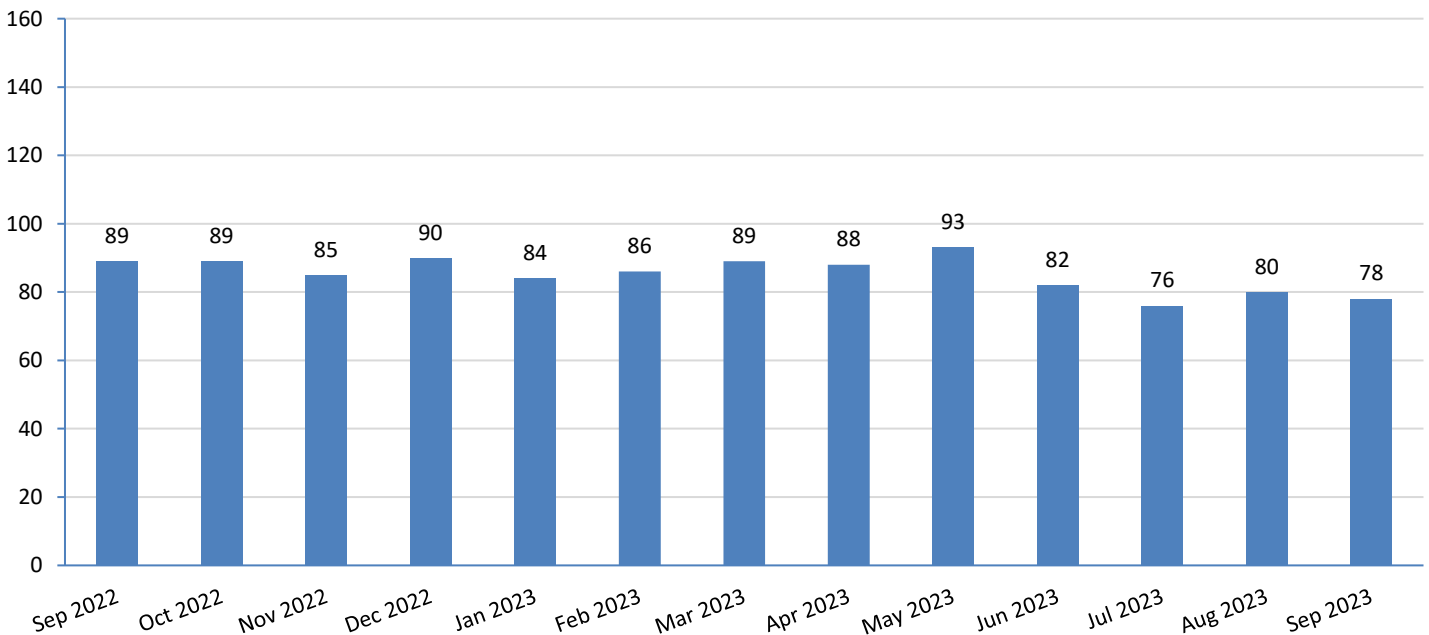


**Nevada Medicaid Fee for Service - Behavioral Health**  
**Out-of-State Residential Treatment Center Placements for Children**  
**Patients by Provider State**  
**September 2022 - September 2023**

Time Period: Incurred With Runoff Month	Patients*										
	Provider State										
	AR	FL	GA	MO	OK	OR	PA	TN	TX	UT	Total
Sep 2022	6	0	0	10	1	1	0	2	15	54	<b>89</b>
Oct 2022	8	0	0	11	1	1	0	1	12	56	<b>89</b>
Nov 2022	8	0	0	11	1	1	0	1	9	54	<b>85</b>
Dec 2022	8	0	0	11	1	0	0	1	9	60	<b>90</b>
Jan 2023	7	1	0	8	1	0	0	1	8	59	<b>84</b>
Feb 2023	6	0	1	8	2	0	0	0	7	62	<b>86</b>
Mar 2023	7	1	1	10	2	0	0	0	7	61	<b>89</b>
Apr 2023	8	1	1	5	1	0	0	1	7	64	<b>88</b>
May 2023	9	1	1	3	1	1	0	1	6	70	<b>93</b>
Jun 2023	8	1	1	3	0	1	0	1	3	64	<b>82</b>
Jul 2023	5	1	1	1	0	1	0	1	4	62	<b>76</b>
Aug 2023	5	1	0	0	0	1	0	1	7	65	<b>80</b>
Sep 2023	5	1	0	0	0	1	1	3	7	60	<b>78</b>

\* Patient counts are unique; however, if patients fall into more than one provider states during the indicated time period, they are counted one time under each provider state.

**Count of Out-of-State Residential Treatment Center Child Patients**  
**September 2022 - September 2023**



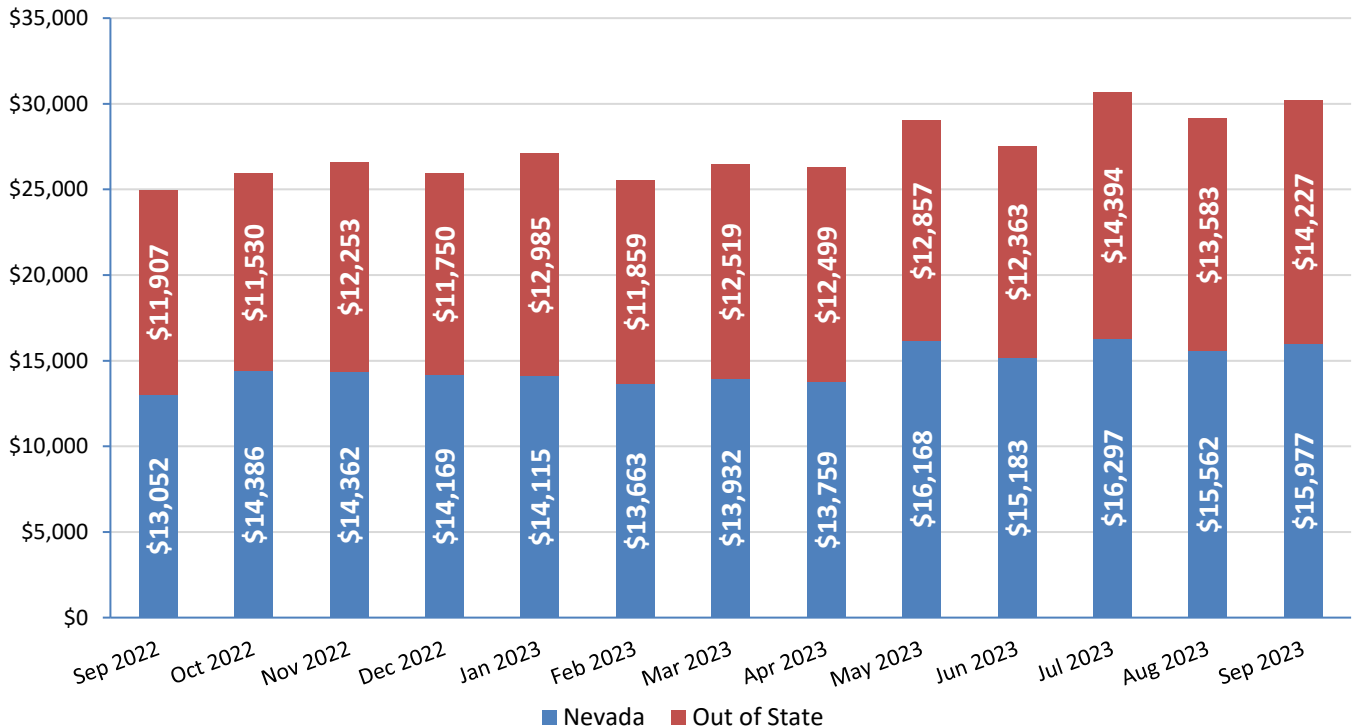
**Nevada Medicaid Fee for Service - Behavioral Health  
Residential Treatment Center Placements for Children  
Patients, Service Count, Net Payment and Net Payment Per Patient by Provide State Category  
September 2022 - September 2023**

Time Period: Incurred With Runoff Month	Nevada RTC*				Out-of-State RTC*			
	Patients^	Service Count Paid	Net Payment	Net Pay Per Patient	Patients^	Service Count Paid	Net Payment	Net Pay Per Patient
Sep 2022	155	3,795	\$2,023,133	\$13,052	89	2,429	\$1,059,757	\$11,907
Oct 2022	142	3,769	\$2,042,751	\$14,386	89	2,408	\$1,026,140	\$11,530
Nov 2022	139	3,511	\$1,996,362	\$14,362	85	2,475	\$1,041,503	\$12,253
Dec 2022	143	3,572	\$2,026,209	\$14,169	90	2,505	\$1,057,532	\$11,750
Jan 2023	135	3,379	\$1,905,475	\$14,115	84	2,463	\$1,090,722	\$12,985
Feb 2023	134	3,209	\$1,830,844	\$13,663	86	2,295	\$1,019,913	\$11,859
Mar 2023	145	3,397	\$2,020,079	\$13,932	89	2,386	\$1,114,196	\$12,519
Apr 2023	139	3,132	\$1,912,562	\$13,759	88	2,379	\$1,099,940	\$12,499
May 2023	128	3,232	\$2,069,519	\$16,168	93	2,592	\$1,195,711	\$12,857
Jun 2023	123	2,924	\$1,867,563	\$15,183	82	2,139	\$1,013,782	\$12,363
Jul 2023	117	2,994	\$1,906,703	\$16,297	76	2,172	\$1,093,968	\$14,394
Aug 2023	113	2,710	\$1,758,489	\$15,562	80	2,175	\$1,086,677	\$13,583
Sep 2023	107	2,528	\$1,709,571	\$15,977	78	2,185	\$1,109,675	\$14,227

\* The report indicates the number of in-state and out-of-state services for RTC patients who are children aged through 19 years old.

^ Patient counts are unique and based upon when the service occurred and not when the service was paid.

**Net Payment per Patient by Provider State Category (Nevada vs Out-of-State)  
September 2022 - September 2023**



Data Source: Nevada Medicaid Decision Support System (DSS)

Data provided by JZ on 12/14/2023

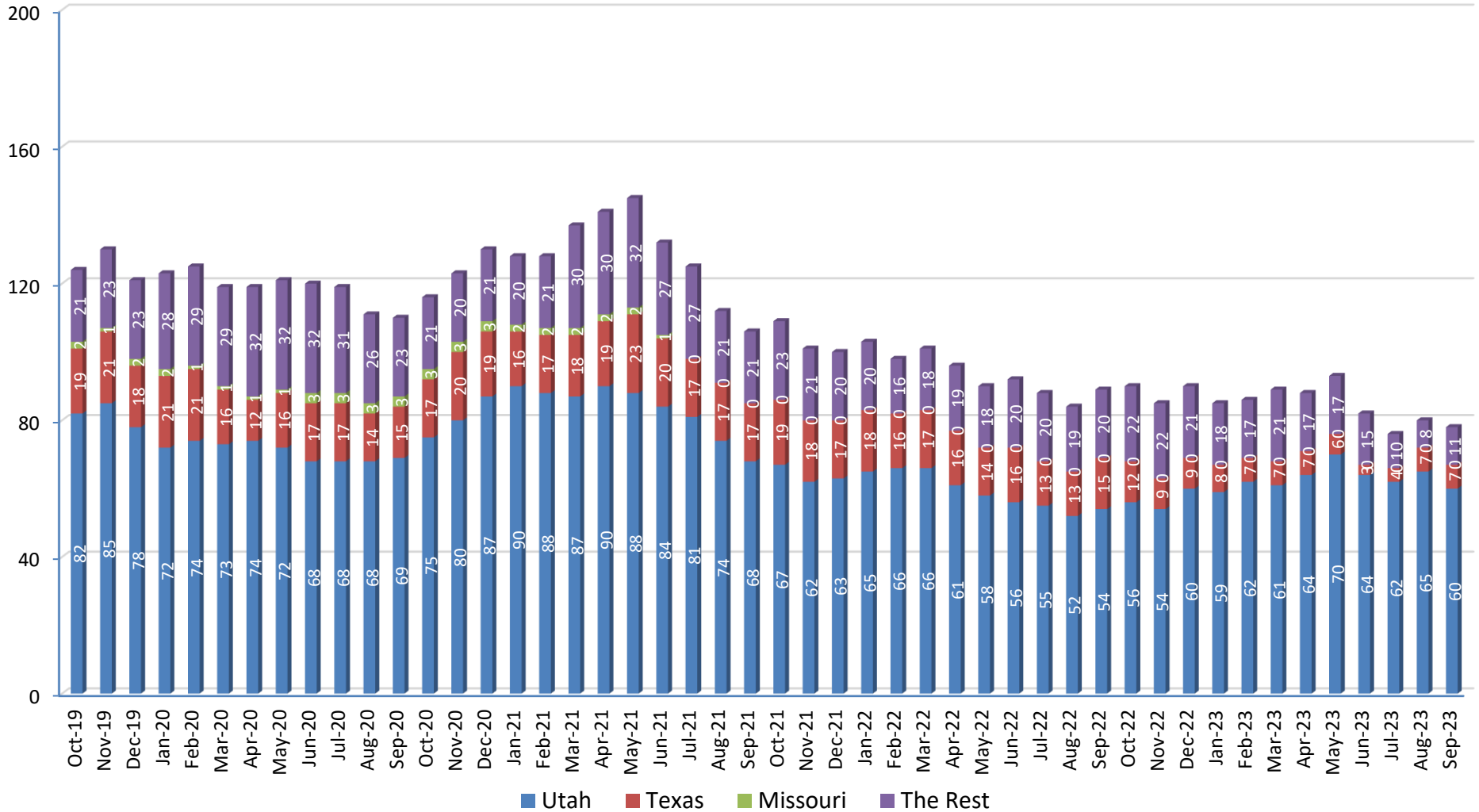
**Nevada Medicaid Fee for Service - Behavioral Health  
Out-of-State Residential Treatment Center Placements for Children  
Patients by Providers and Age Group  
September 2023**

Provider NPI Code	Provider Name	Provider State Code	September 2023				
			Patients				
			Ages 5-9	Ages 10-14	Ages 15-17	Ages 18-19	Total
1598772618	BENCHMARK BEHAVIORAL HEALTH SYSTEM INC	UT	0	2	6	0	8
1932746070	HABILITATION CENTER, LLC	AR	0	2	0	0	2
1528116746	HAVENWOOD ACADEMY INC	UT	0	1	2	0	3
1497821680	JASPER MOUNTAIN	OR	0	1	0	0	1
1649380593	KIDS BEHAVIORAL HEALTH OF UTAH, INC.	UT	0	1	0	0	1
1952482036	Millcreek of Arkansas	AR	0	1	1	0	2
1760482939	NEURO INSTITUTE OF AUSTIN, L.P.	TX	2	3	1	0	6
1447380423	Piney Ridge Treatment Center	AR	0	0	1	0	1
1275285413	RITE OF PASSAGE, INC	TN	0	1	0	0	1
1992877948	SHILOH TREATMENT CENTER, INC.	TX	1	0	0	0	1
1093849598	THE DEVEREUX FOUNDATION	FL	1	0	0	0	1
1558499103	TURNING POINT FAMILY CARE, INC.	UT	0	7	16	0	23
1609843523	UHS OF PROVO CANYON INC.	UT	0	7	9	0	16
1598998619	VILLAGE BEHAVIORAL HEALTH, LLC	TN	0	2	0	0	2
1386890713	WHITE DEER RUN, LLC	PA	0	0	1	0	1
1518340173	YOUTH HEALTH ASSOCIATES	UT	0	0	1	1	2
1598149163	YOUTH HEALTH ASSOCIATES	UT	0	0	2	0	2
1669857629	YOUTH HEALTH ASSOCIATES	UT	0	0	3	0	3
1750766713	YOUTH HEALTH ASSOCIATES	UT	0	1	1	0	2
<b>Total</b>			<b>4</b>	<b>29</b>	<b>44</b>	<b>1</b>	<b>78</b>



**Out-of-State Residential Treatment Center Patients by Provider States and Service Month/Year - 4 Year Rolling  
Nevada Medicaid FFS, October 2019 - September 2023**

Count of Out-of-State RTC Patients by Provider States and Service Month/Year  
Nevada Medicaid FFS, October 2019 - September 2023



Data Source: Nevada Medicaid Decision Support System (DSS)  
Data provided by JZ on 12/14/2023

**Nevada Medicaid Fee for Service - Behavioral Health  
Out-of-State Residential Treatment Center Placements for Children  
Patients by Provider States and Service Month/Year  
October 2019 - September 2023**

Month/Year	Patients*				
	Provider State				
	Utah	Texas	Missouri	The Rest	All States
Oct-19	82	19	2	21	124
Nov-19	85	21	1	23	128
Dec-19	78	18	2	23	121
Jan-20	72	21	2	28	123
Feb-20	74	21	1	29	125
Mar-20	73	16	1	29	119
Apr-20	74	12	1	32	119
May-20	72	16	1	32	121
Jun-20	68	17	3	32	120
Jul-20	68	17	3	31	119
Aug-20	68	14	3	26	111
Sep-20	69	15	3	23	110
Oct-20	75	17	3	21	116
Nov-20	80	20	3	20	122
Dec-20	87	19	3	21	130
Jan-21	90	16	2	20	128
Feb-21	88	17	2	21	128
Mar-21	87	18	2	30	137
Apr-21	90	19	2	30	141
May-21	88	23	2	32	145
Jun-21	84	20	1	27	132
Jul-21	81	17	0	27	125
Aug-21	74	17	0	21	112
Sep-21	68	17	0	21	106
Oct-21	67	19	0	23	109
Nov-21	62	18	0	21	101
Dec-21	63	17	0	20	100
Jan-22	65	18	0	20	103
Feb-22	66	16	0	16	98
Mar-22	66	17	0	18	101
Apr-22	61	16	0	19	96
May-22	58	14	0	18	90
Jun-22	56	16	0	20	92
Jul-22	55	13	0	20	88
Aug-22	52	13	0	19	84
Sep-22	54	15	0	20	89
Oct-22	56	12	0	22	89
Nov-22	54	9	0	22	85
Dec-22	60	9	0	21	90
Jan-23	59	8	0	18	84
Feb-23	62	7	0	17	86

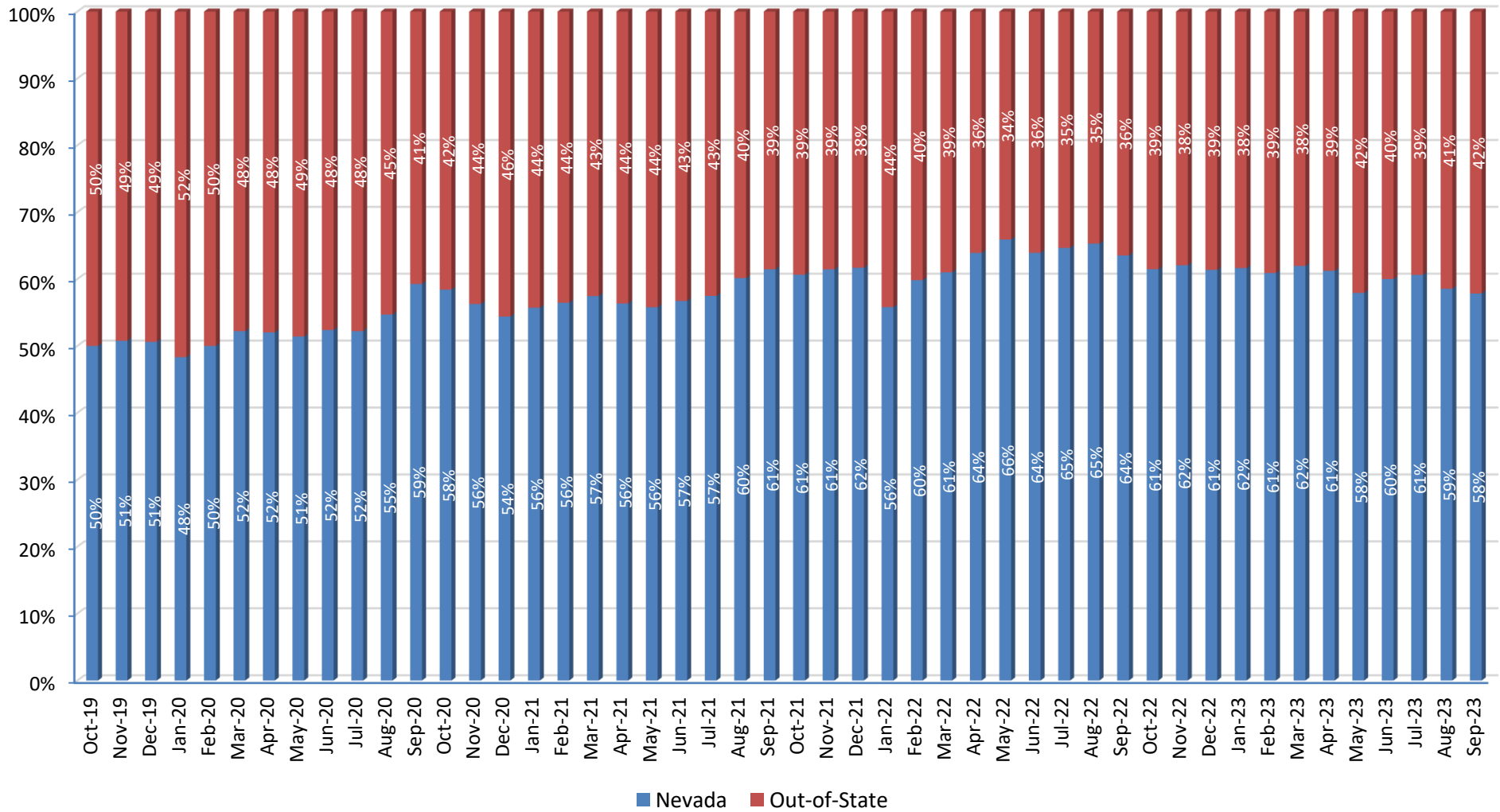
**Nevada Medicaid Fee for Service - Behavioral Health  
Out-of-State Residential Treatment Center Placements for Children  
Patients by Provider States and Service Month/Year  
October 2019 - September 2023**

Month/Year	Patients*				
	Provider State				
	Utah	Texas	Missouri	The Rest	All States
Mar-23	61	7	0	21	89
Apr-23	64	7	0	17	88
May-23	70	6	0	17	93
Jun-23	64	3	0	15	82
Jul-23	62	4	0	10	76
Aug-23	65	7	0	8	80
Sep-23	60	7	0	11	78

\* Patient counts are unique; however, if patients fall into more than one provider states during the indicated time period, they are counted one time under each provider state.

**Residential Treatment Center Patients by Provider State Category (Nevada vs Out-of-State) and Service Month/Year - 4 Year Rolling Percentages**  
**Nevada Medicaid FFS, October 2019 - September 2023**

Percent of RTC Patients by Provider State Category and Service Month/Year  
Nevada Medicaid FFS, October 2019 - September 2023



Data Source: Nevada Medicaid Decision Support System (DSS)  
Data provided by JZ on 12/14/2023

**Nevada Medicaid Fee for Service - Behavioral Health  
Residential Treatment Center Placements for Children  
Patients by Provider State Category (Nevada vs Out-of-State) and Service Month/Year  
October 2019 - September 2023**

Month/Year	Patients*				
	Provider State Category				
	Nevada	Out-of-State	All States	Nevada %	Out-of-State %
Oct-19	124	124	248	50%	50%
Nov-19	132	128	260	51%	49%
Dec-19	124	121	245	51%	49%
Jan-20	115	123	237	48%	52%
Feb-20	125	125	247	50%	50%
Mar-20	130	119	248	52%	48%
Apr-20	129	119	248	52%	48%
May-20	128	121	249	51%	49%
Jun-20	132	120	251	52%	48%
Jul-20	130	119	247	52%	48%
Aug-20	134	111	243	55%	45%
Sep-20	160	110	269	59%	41%
Oct-20	163	116	279	58%	42%
Nov-20	157	122	279	56%	44%
Dec-20	155	130	285	54%	46%
Jan-21	161	128	288	56%	44%
Feb-21	166	128	293	56%	44%
Mar-21	185	137	320	57%	43%
Apr-21	182	141	322	56%	44%
May-21	183	145	326	56%	44%
Jun-21	173	132	303	57%	43%
Jul-21	169	125	294	57%	43%
Aug-21	169	112	278	60%	40%
Sep-21	169	106	275	61%	39%
Oct-21	168	109	277	61%	39%
Nov-21	161	101	261	61%	39%
Dec-21	161	100	259	62%	38%
Jan-22	130	103	231	56%	44%
Feb-22	146	98	243	60%	40%
Mar-22	158	101	258	61%	39%
Apr-22	170	96	266	64%	36%
May-22	174	90	264	66%	34%
Jun-22	163	92	254	64%	36%
Jul-22	161	88	247	65%	35%
Aug-22	158	84	242	65%	35%
Sep-22	155	89	240	64%	36%
Oct-22	142	89	229	61%	39%
Nov-22	139	85	224	62%	38%
Dec-22	143	90	233	61%	39%
Jan-23	135	84	219	62%	38%
Feb-23	134	86	219	61%	39%

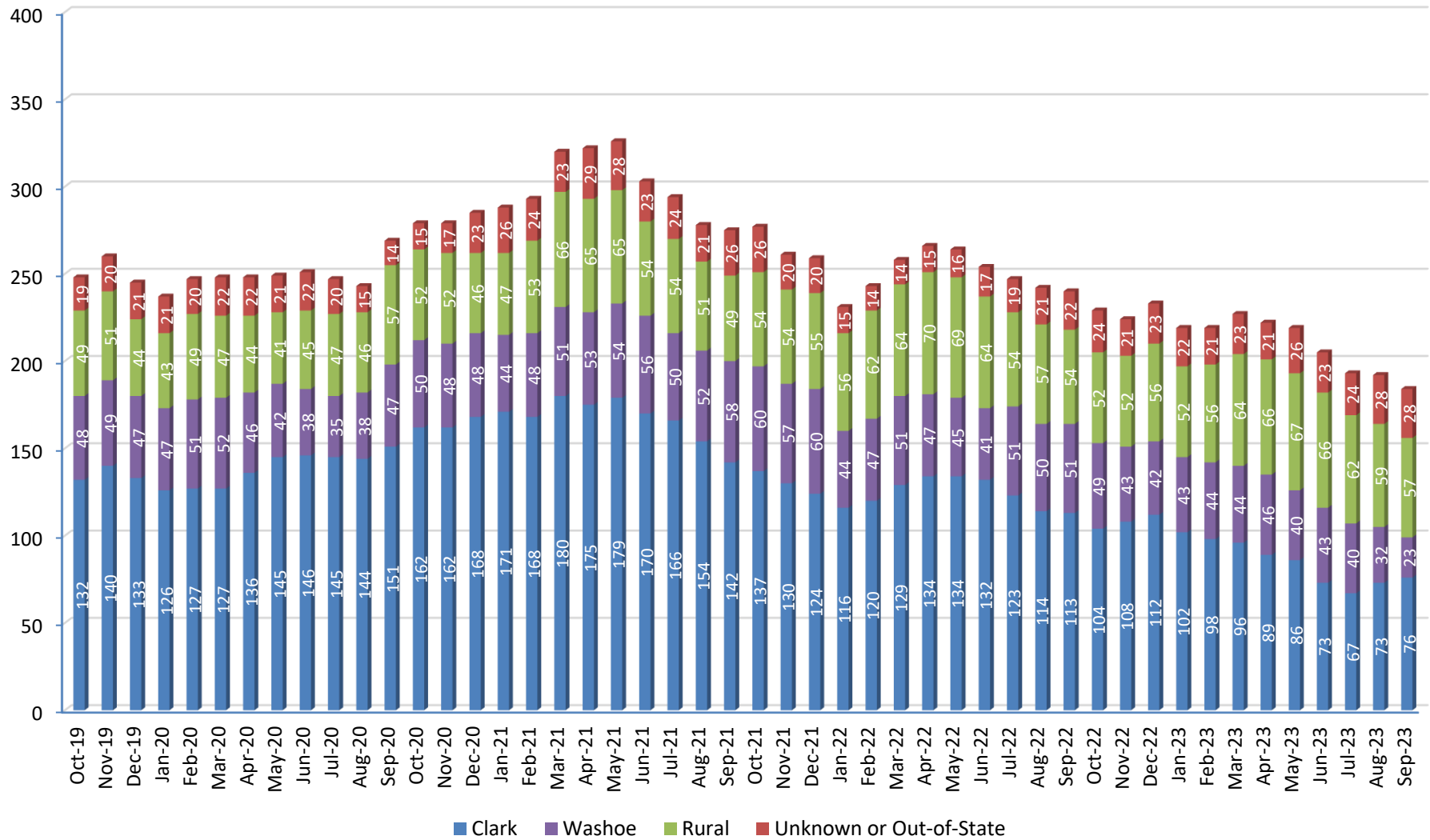
**Nevada Medicaid Fee for Service - Behavioral Health  
Residential Treatment Center Placements for Children  
Patients by Provider State Category (Nevada vs Out-of-State) and Service Month/Year  
October 2019 - September 2023**

Month/Year	Patients*				
	Provider State Category				
	Nevada	Out-of-State	All States	Nevada %	Out-of-State %
Mar-23	145	89	227	62%	38%
Apr-23	139	88	222	61%	39%
May-23	128	93	219	58%	42%
Jun-23	123	82	205	60%	40%
Jul-23	117	76	193	61%	39%
Aug-23	113	80	192	59%	41%
Sep-23	107	78	184	58%	42%

\* Patient counts are unique; however, if patients fall into more than one provider state category during the indicated time period, they are counted one time under each provider state category.

**Count of Residential Treatment Center Patients by Residency County and Service Month/Year - 4 Year Rolling  
Nevada Medicaid FFS, October 2019 - September 2023**

Count of RTC Patients by Residency County and Service Month/Year  
Nevada Medicaid FFS, October 2019 - September 2023



Data Source: Nevada Medicaid Decision Support System (DSS)  
Data provided by JZ on 9/26/2023

**Nevada Medicaid Fee for Service - Behavioral Health  
Residential Treatment Center Placements for Children  
Patients by Residency County and Service Month/Year  
October 2019 - September 2023**

Month/Year	Patients				
	Patient Residency County				
	Clark	Washoe	Rural	Unknown or Out-of-State	All Counties
Oct-19	132	48	49	19	248
Nov-19	140	49	51	20	260
Dec-19	133	47	44	21	245
Jan-20	126	47	43	21	237
Feb-20	127	51	49	20	247
Mar-20	127	52	47	22	248
Apr-20	136	46	44	22	248
May-20	145	42	41	21	249
Jun-20	146	38	45	22	251
Jul-20	145	35	47	20	247
Aug-20	144	38	46	15	243
Sep-20	151	47	57	14	269
Oct-20	162	50	52	15	279
Nov-20	162	48	52	17	279
Dec-20	168	48	46	23	285
Jan-21	171	44	47	26	288
Feb-21	168	48	53	24	293
Mar-21	180	51	66	23	320
Apr-21	175	53	65	29	322
May-21	179	54	65	28	326
Jun-21	170	56	54	23	303
Jul-21	166	50	54	24	294
Aug-21	154	52	51	21	278
Sep-21	142	58	49	26	275
Oct-21	137	60	54	26	277
Nov-21	130	57	54	20	261
Dec-21	124	60	55	20	259
Jan-22	116	44	56	15	231
Feb-22	120	47	62	14	243
Mar-22	129	51	64	14	258
Apr-22	134	47	70	15	266
May-22	134	45	69	16	264
Jun-22	132	41	64	17	254
Jul-22	123	51	54	19	247
Aug-22	114	50	57	21	242
Sep-22	113	51	54	22	240
Oct-22	104	49	52	24	229
Nov-22	108	43	52	21	224
Dec-22	112	42	56	23	233
Jan-23	102	43	52	22	219



**Nevada Medicaid Fee for Service - Behavioral Health  
Residential Treatment Center Placements for Children  
Patients by Residency County and Service Month/Year  
October 2019 - September 2023**

Month/Year	Patients				
	Patient Residency County				
	Clark	Washoe	Rural	Unknown or Out-of-State	All Counties
Feb-23	98	44	56	21	219
Mar-23	96	44	64	23	227
Apr-23	89	46	66	21	222
May-23	86	40	67	26	219
Jun-23	73	43	66	23	205
Jul-23	67	40	62	24	193
Aug-23	73	32	59	28	192
Sep-23	76	23	57	28	184

Department of Health and Human Services  
Office of Analytics

<u>Dimension/Measure</u>	<u>Definition</u>
161004 OOS RTC Enrollees	Custom built subset that combines <b>Provider Type Claim NV Code = 63</b> (Residential Treatment Center), and <b>Provider State Code &lt;&gt; NV</b> ; excludes voided claims
Diagnosis Principal	The principal diagnosis description for a service, claim, or lab result.
Net Pay Per Pat	The average net amount paid, per patient, for all claims. It represents the amount after all pricing guidelines have been applied, and all third party, copayment, coinsurance, and deductible amounts have been subtracted.
Net Payment	The net amount paid for all claims. It represents the amount after all pricing guidelines have been applied, and all third party, copayment, coinsurance, and deductible amounts have been subtracted.
Patients	The unique count of members who received facility, professional, or pharmacy services.
Provider State Code	The current state abbreviation for the provider of service.
Provider Type Claim NV Code	The Nevada specific code for the servicing provider type on the claim record.
Service Count Paid	The sum of the units paid across professional and facility claims.
<i>All information is provided in Incurred Mode (by the date of when services were provided). The Nevada Medicaid Fee for Service (FFS) Data Warehouse (DSS) has a three-month block on the most recent months to ensure there is near to 100% processing of all FFS claims. Out-of-State providers have 12 months to submit claims (in-state providers have six months).</i>	
<i>The DHCFP data warehouse is comprised of claims data submitted by over 35,000 Medicaid providers from within Nevada and across the country. While DHCFP staff conscientiously make their best efforts to validate this data through continuous provider education and the use of a highly experienced audit staff, the Division heavily relies on its providers to submit accurate and complete information on our Medicaid patients. It should therefore be understood by the users of DHCFP reports on disease morbidity and patient health that the data source for these reports is based solely on patient claims and may not be a complete and comprehensive health record.</i>	
<i>This report is provided for the use of specific DHHS staff only; these data are proprietary, confidential, and for internal use only. Do not distribute.</i>	